



Anne Arundel County Public Schools Mental Health Task Force

September 13, 2019

Co-Chaired by

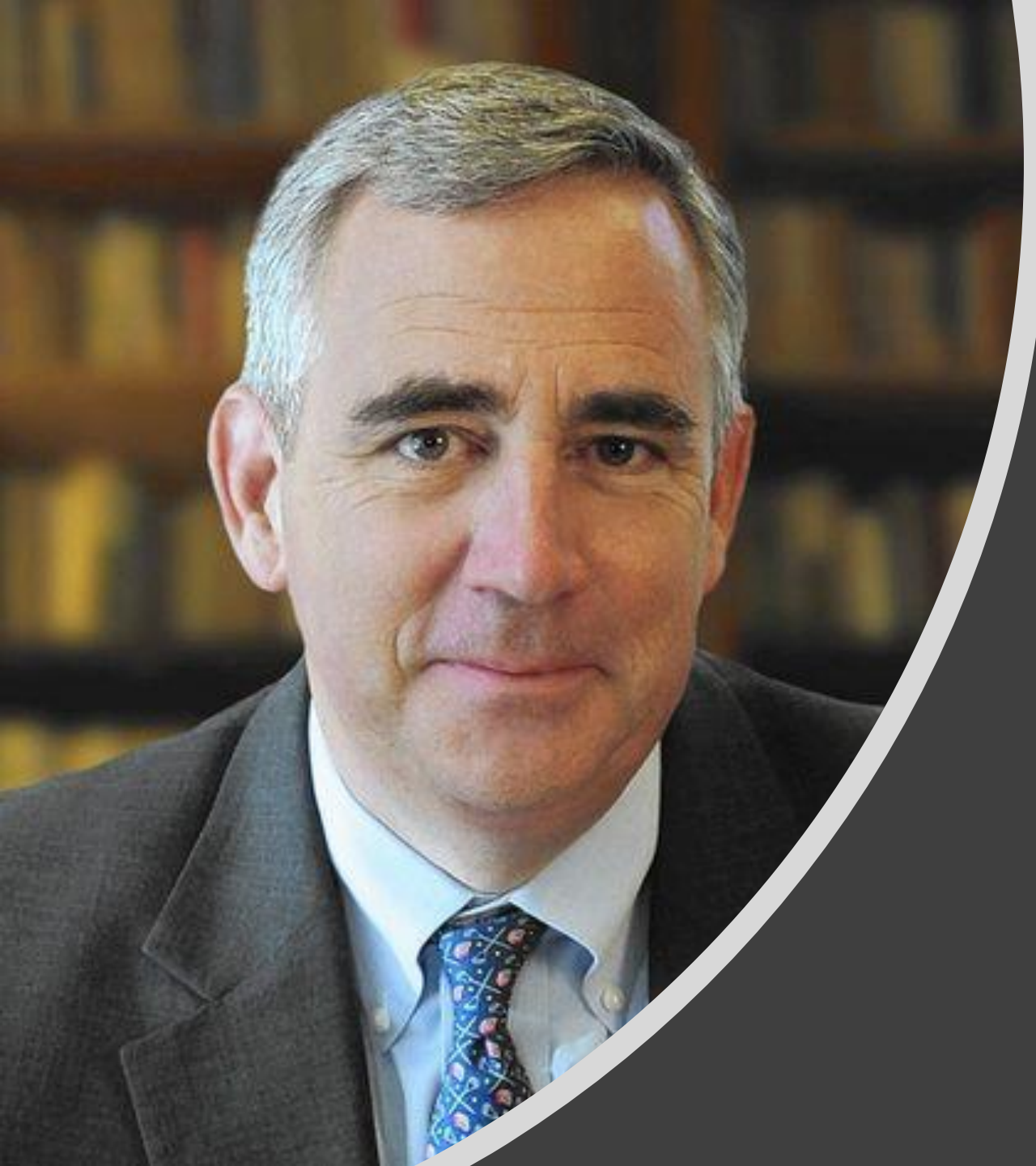
Ryan Voegtlin, AACPS Director of Student Services

rvoegtlin@aacps.org

&

Adrienne Mickler, Executive Director the Anne Arundel Mental Health
Agency

amickler@aamentalhealth.org



Greetings from
Dr. Arlotto,
Superintendent
of Anne Arundel
County Public
Schools

Task Force Expectations

Learn

Lean In

Bring Ideas

Share Knowledge

Co-Chairs of the Anne Arundel County Public Schools Mental Health Task Force

Ryan Voegtlin, Director of Student
Services, AACPS

Adrienne Mickler, Executive Director of
the Anne Arundel Mental Health Agency





Members of the Task Force



AACPS Support Staff

Goals of the Task Force

Identify contributing factors to the increasing mental health needs of our children.

Better coordinate services and communication between and among the school system, county government, and providers.

Identify proactive measures and best practices.

To make recommendations for improved delivery of services to children and families.

Structure of the Task Force

Co- Chaired by AACPS and the Anne Arundel Mental Health Agency

Initial Meeting in September with a final report to the Board in May 2020

Meetings for September, November, January, and March

- ✓ Develop an overview of services in through AACPS and Anne Arundel County government agencies
- ✓ Conduct a GAP analysis
- ✓ Establish subcommittees
- ✓ Provide recommendations for next steps

Mental Health Needs Pre-Assessment





Join with this CODE at Nearpod.com or in the app

VGZBI



Email



Social



Link



Google
Classroom



Remind



Microsoft
Teams

Go

to **www.nearpod.com** on your phone or an AACPS Chrome Book.

Enter

the code on the screen.

Type

your name.

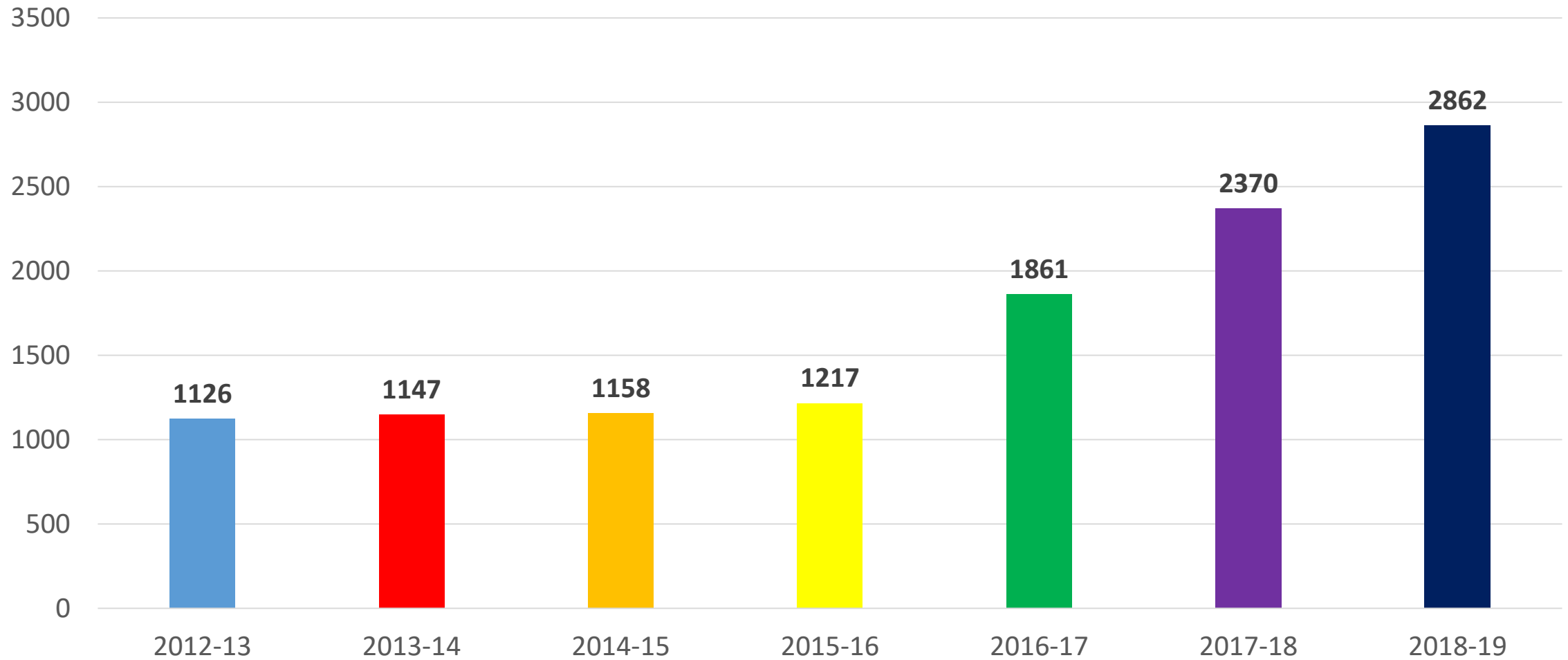
Start

answering the questions.

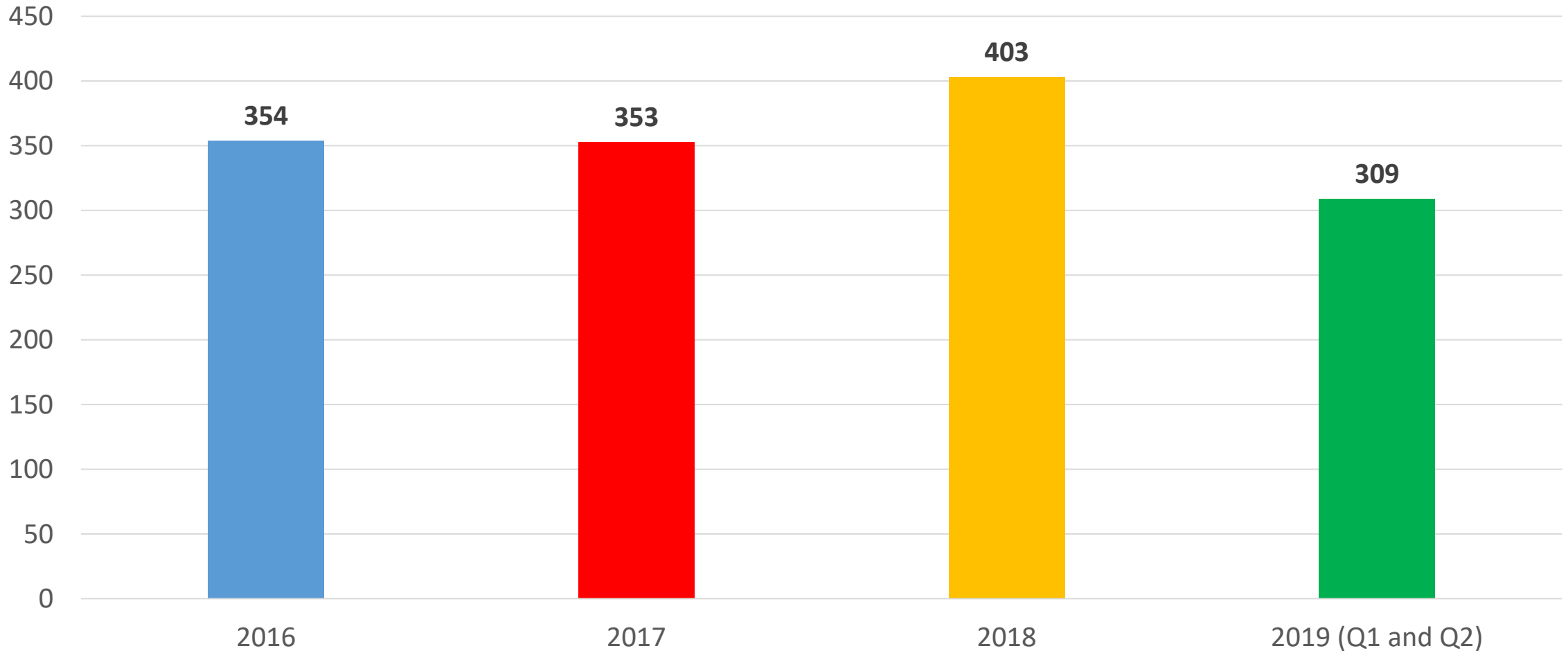


Data Demonstrating the Need for a Mental Health Task Force

Trend in Reports of Threats of Self-Harm by AACPS Students 2012-2019



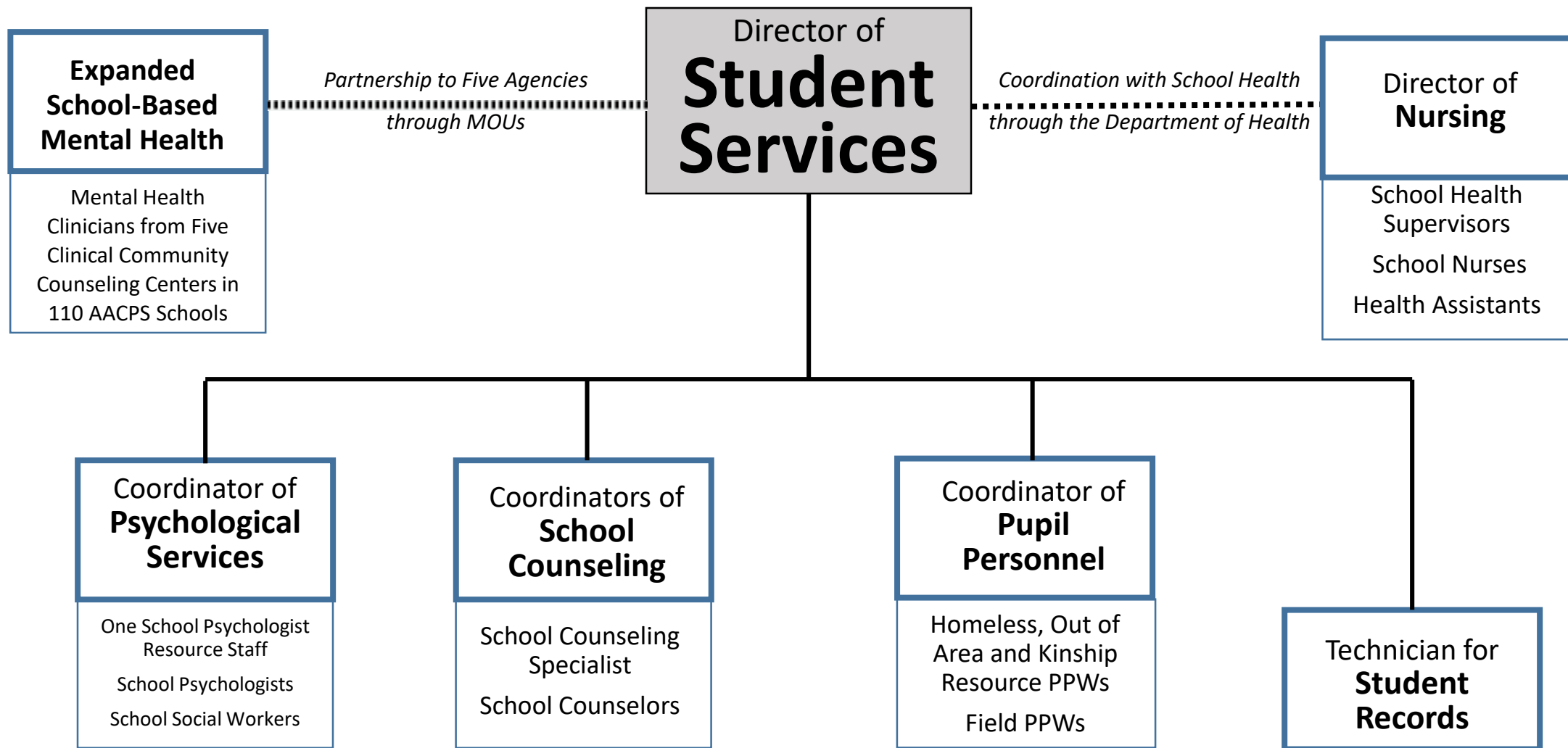
Number of Youth Served by Mobile Crisis



Note: Approximately 50% of the calls each year are child behaviors or suicidal ideation.

AACPS Office of Student Services





Our Mission

*Student
Services*

Supporting
students
in overcoming
barriers to achieve
school success.

Our Vision

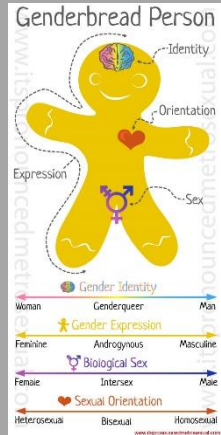
Student Services

We will work as
collaborative and
coordinated teams
to determine supports
to overcome barriers
to student success.



KEY ISSUES

**Trauma
Response**



**Trauma-
Informed
Care**

Supporting and Assessing
Students with Disabilities
(IEP and 504)



Truancy

**Social and
Emotional
Learning**

Supporting Students with
Social/Emotional/
Behavioral Challenges

**SCHOOL
THREAT**

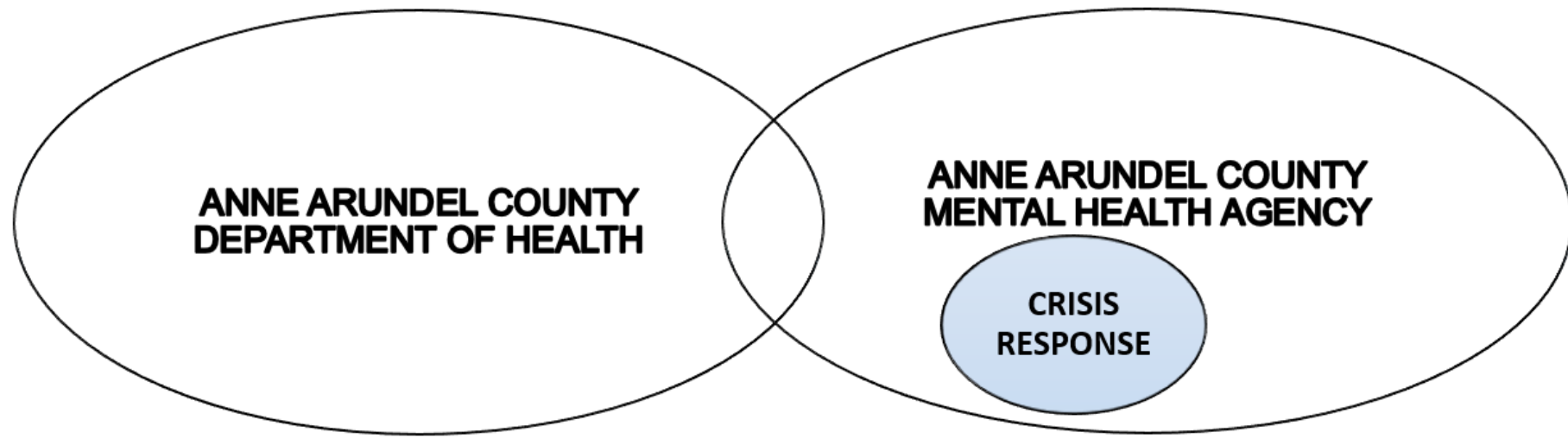
Homelessness

Anne Arundel Mental Health Agency





RELATIONSHIP OF THE MENTAL HEALTH AGENCY TO ANNE ARUNDEL COUNTY



Eligibility for Youth



Behavioral Health Diagnosis



Under the Age of 18

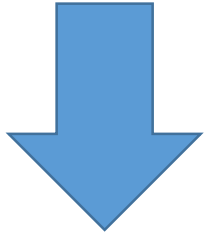


Medical Assistance or Uninsured



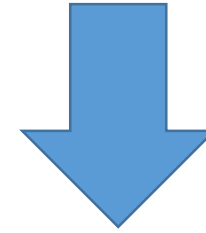
Privately Insured

Behavioral Health Diagnosis



Privately Insured

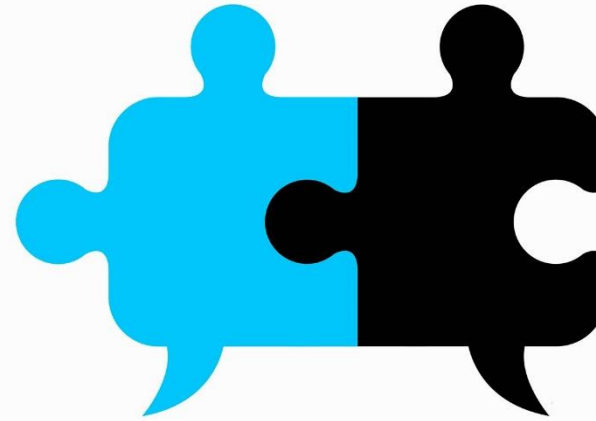
- Under 26
- Outpatient Services
- Psychiatric Day Program
- Inpatient Hospital



Medical Assistance/Uninsured

- Under 18
- Outpatient Services
- Psychiatric Day Program
- Inpatient Hospital
- Psychiatric Rehabilitation Program
- Care Coordination
- In-Home Intervention Program
- TAY (Transition Age Youth)
- Residential Treatment Center
- Respite
- 1915 (i)
- Crisis Respond System
- RESPOND
- TCM Plus

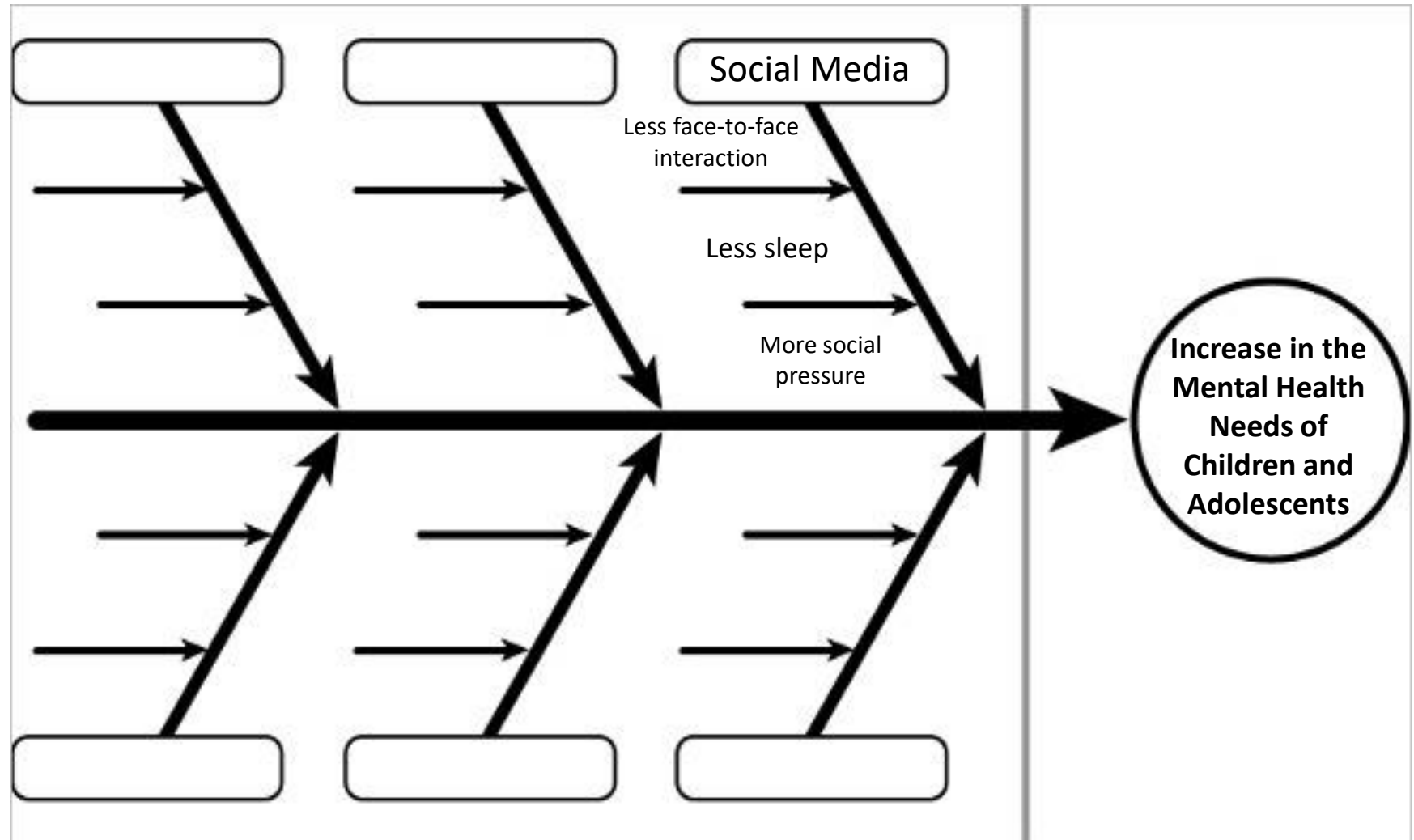
Understanding the
Contributing
Factors to the
Increase in the
Mental Health
Needs of Children
and Adolescents



Jigsaw Activity Directions

- Each person will be given one of the following articles and will highlight and take notes as they read the article.
 - Social Media Linked to Rise in Mental Health Disorders in Teens, Survey Finds
 - Social Injustice and the Cycle of Traumatic Childhood Experiences and Multiple Problems in Adulthood
 - American Academy of Pediatrics Addresses Racism and Its Health Impact on Children and Teens
 - The Ripple Effect: An In-Depth Look at The Hidden Impact of The Opioid Epidemic on Children
 - The Epidemic of Anxiety Among Today's Students
 - Studies: LGBTQ Youths Have Higher Rates of Mental Health Issues, Abuse
 - Mental Health and Stigma
 - Research: Latino Children More Depressed, Less Likely to Get Mental Health Care Than Their Peers
- After reading the article, individuals will form a group based on the number at the top of their article.
- Once the groups have been formed, individuals will take one minute to share the important points of what they read in their article with the group.
- Individuals will go stay in their groups for the next activity.

Fishbone Diagram



Root Cause Analysis



Anne Arundel County Public Schools Mental Health Task Force Subcommittees



Subcommittee #1 –
Contributing Factor 1



Subcommittee #2 –
Contributing Factor 2



Subcommittee #3 –
Contributing Factor 3



Subcommittee #4 –
Contributing Factor 4



Subcommittee #5 –
Contributing Factor 5



Subcommittee #6 –
Contributing Factor 6

Essential Questions of the Subcommittees



How is this contributing factor impacting the mental health of children?



What is the coordination of services and communication between agencies in Anne Arundel County around this contributing factor? Where is there a gap in services?



Based on research, what are the best practices and proactive measures that we can take in Anne Arundel County to address this contributing factor?



What are the recommendations around improved delivery of mental health services based on this contributing factor?

Closing Survey

Please go to the link below and fill out the Survey Monkey



<https://www.surveymonkey.com/r/aacpsmentalhealth>



Next Steps

- Review Parking Lot questions.
- The co-chairs will take the information gathered from today's meeting and create subcommittees.
- Between now and the next meeting, each committee member will receive an e-mail about your subcommittee assignment and any tasks required prior to the next meeting.

Next Meeting

Friday, November 22nd 1:30-3:30 pm

Thank
you!